

DEBRIS NETTING

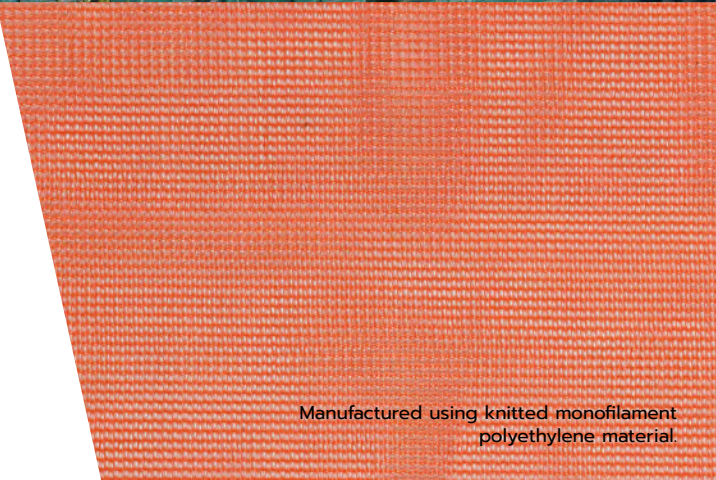
WHEN YOU'RE WORKING AT A CONSTRUCTION SITE, WIND IS YOUR ENEMY.

Heavy bursts send debris and construction materials flying and take valuable time and energy away from your project. Workers can't perform the way you need them to when they're battling against wind. Your people need protection from the elements, so their items stay exactly where they left them and don't become a hazard to the people working below.

Norseman's Debris Netting is built using knitted monofilament polyethylene material, with the edges reinforced for additional durability.

- High-strength Debris Netting lets in light and allows for air movement as it controls and contains dust.
- Essential when you need to keep the elements out and contain debris and items within your jobsite.
- Can be hung vertically or horizontally.
- Allows workers to continue to perform in severe weather, providing a safe and contained workspace that keeps everything where they need it to be, while stopping the elements from disrupting your project.

Your team and your equipment are protected from the elements and have access to a comfortable worksite, allowing them to outwork and overachieve. **Norseman's Debris Netting is GEAR2PERFORM.**



Manufactured using knitted monofilament polyethylene material.



GEAR POINTS:

Features specifically designed to ensure Norseman Gear outperforms on your next jobsite.



PROTECT

Protects your crew and jobsite from inclement weather, while also protecting workers and the public from debris.



WITHSTAND

Manufactured using polyethylene fabric to combine cost efficiency with extreme durability.



RESIST

Flame and mildew resistant, and water repellent.



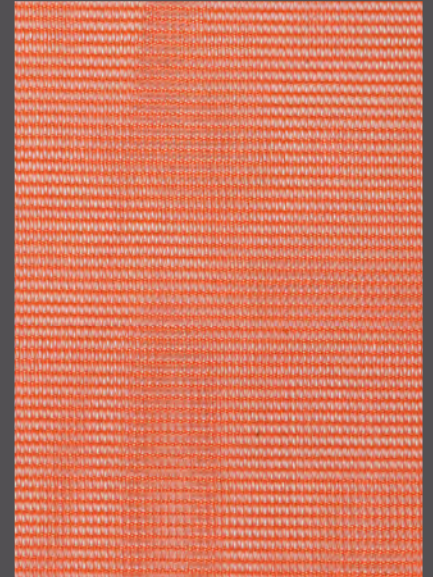
FIT

Can be installed vertically or horizontally to maximize the coverage on your jobsite. Comes in blue, green, orange, or black depending on the size; custom colours are available on some orders.



DELIVER

Allows for air movement on scaffolds, maintaining a safe and comfortable work environment.

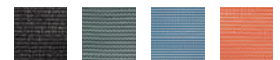


Debris Netting Sample



GEAR INFORMATION:

Available Colours:



ITEM NUMBER	CUT SIZE	COLOUR	FR TESTING
409481	10' x 165'	Green 130gsm Polyethylene 40% Shade	NFPA 701-10
409482	6'.6" x 165'	Green 130gsm Polyethylene 40% Shade	NFPA 701-10
411180	10' x 165'	Blue 130gsm Polyethylene 40% Shade	NFPA 701-10
413735	6'.6" x 165'	Blue 130gsm Polyethylene 40% Shade	NFPA 701-10
413733	6' x 165'	Black 130gsm Polyethylene 40% Shade	NFPA 701-10
450921	4' x 165'	Orange 130gsm Polyethylene 40% Shade	NFPA 701-10
450924	5'.8" x 165'	Black 195gsm Polyethylene 90% Shade	NFPA 701-10

Call our Norseman Gear specialists with the item number to order.
Accessories are available to customize Norseman Gear for your jobsite.

USA 1.844.667.7362
CANADA 1.800.268.1918